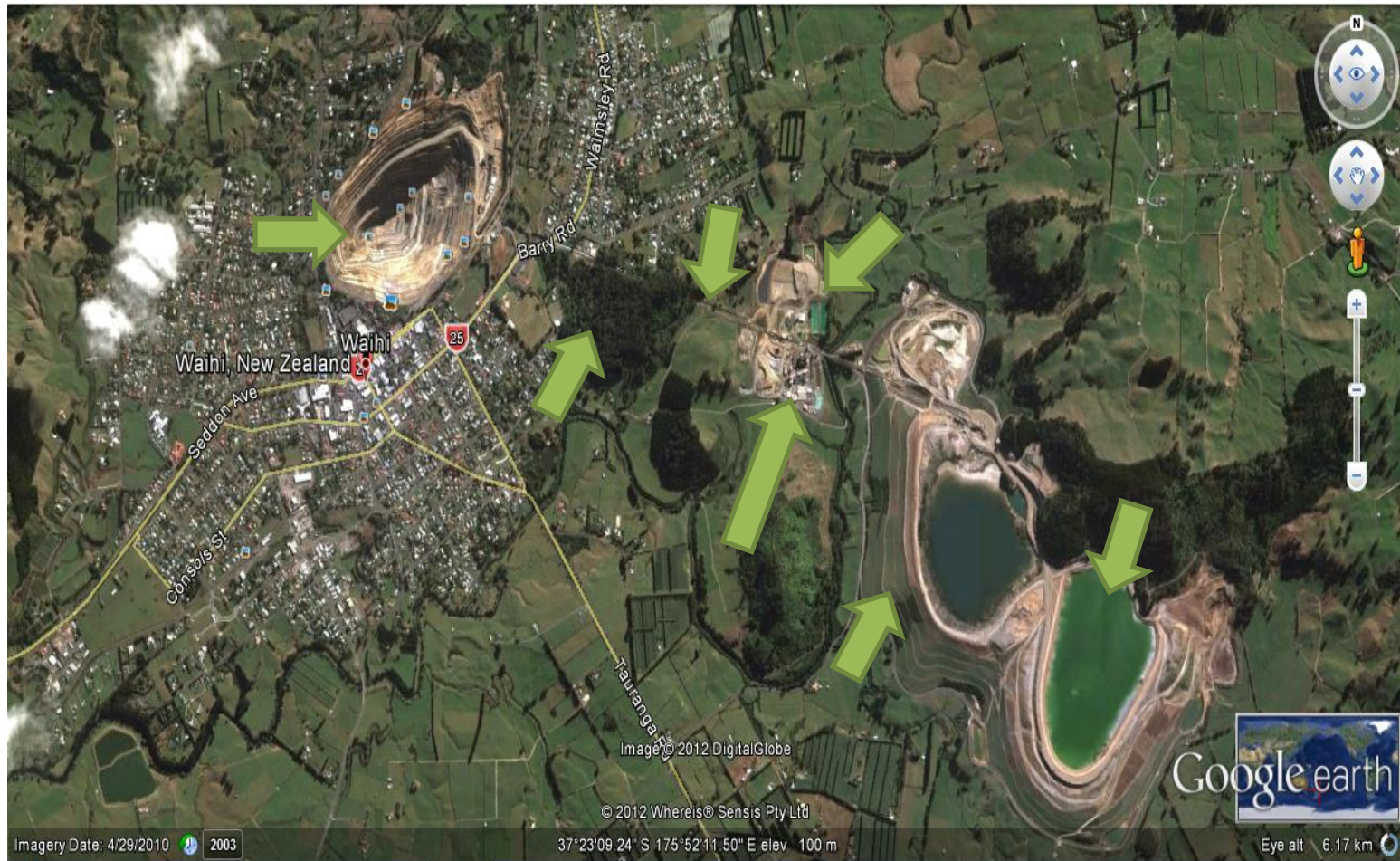


**Waihi Today** – Using Google earth as a class, see if you can locate the different places together. Then by yourself, cut out the different place names and glue them onto the map.



Mill – processing gold and silver

Waste Rock Embankment

Conveyor Belt

Open Pit Mine

Trio Underground Mine

Water Treatment Plant

Tailings ponds

**Match the names with their correct meaning**

<b>Mill</b>	<b>We have been mining this since 1987 and when mining has finished of this area it will be filled up and turned into a lake.</b>
<b>Open Pit</b>	<b>I am used to take rock from the open pit to our processing plant and also waste rock embankment</b>
<b>Trio Underground Mine</b>	<b>I am stored inside our waste rock embankments and am ground up rock which is left over once the gold and silver has been taken out.</b>
<b>Waste Rock Embankment</b>	<b>I am the place where all of the gold and silver is taken out of rock and gold and silver bars are made</b>
<b>Conveyor Belt</b>	<b>I am made out of all of the waste rock that has come from the mine pit that has  No gold and silver in it.</b>
<b>Tailings ponds</b>	<b>All water on our mine site is monitored and tested. Before water is released it can be treated to ensure it is cleaner than clean</b>
<b>Water Treatment Plant</b>	<b>I am the current underground mine ore body in Waihi and will be finished around 2014</b>

